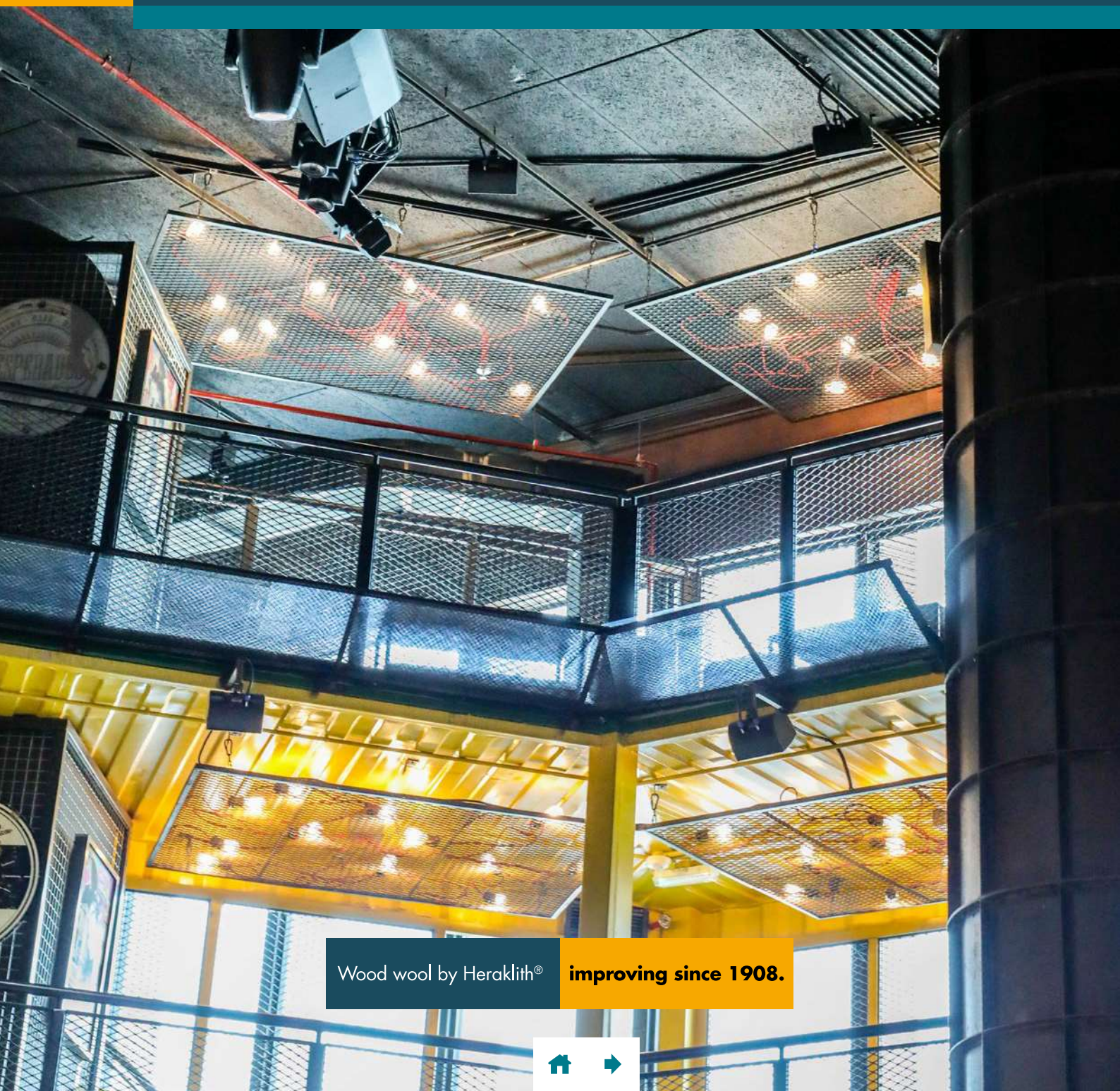


KEY FEATURES AND APPLICATIONS



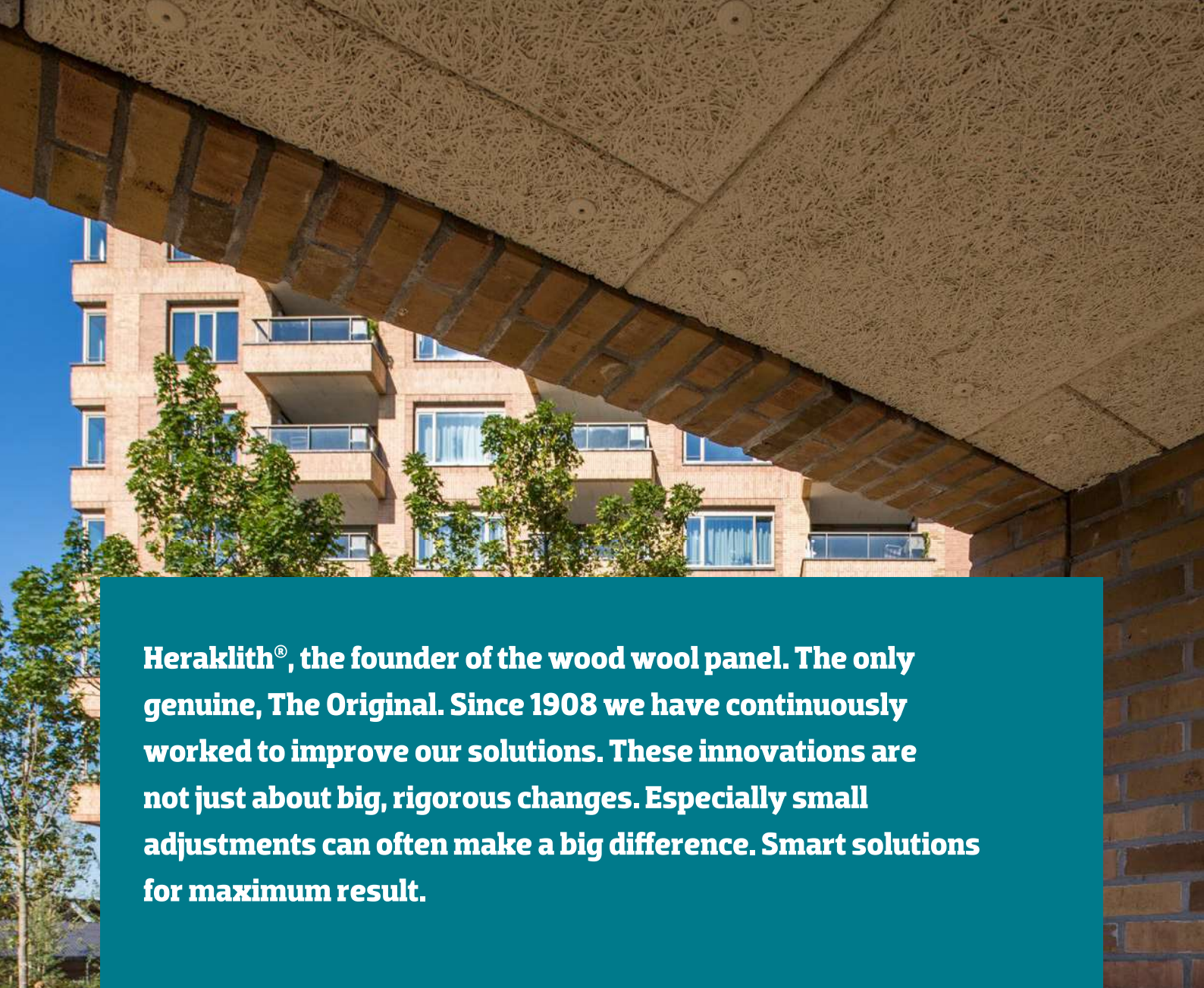
Wood wool by Heraklith® **improving since 1908.**





Heraklith® wood wool boards are sustainable at the core. Wood wool panels help to improve the energy efficiency of a building and reduce CO₂ emissions. Heraklith® produces its wood wool from sustainably managed forests (PEFC). We use natural ingredients to produce our insulation boards. Heraklith® wood wool panels can be used in sustainable projects (such as BREEAM, LEED and WELL).

1. OUR PILLARS	4
■ Expertise	5
■ Innovation	5
■ Service	5
2. SOLID PANELS	6
■ The process: from tree to finished product	6
■ Basic	8
■ A2 Decorative Panel	9
3. A COMPLETE SOLUTION FOR EVERY FINSHING PROJECT	11
■ Heratekta	12
■ Herafoam	14
■ Tektalan A2	16
4. PRODUCT FEATURES	18
■ Fire resistance	18
■ Acoustic performance	19
■ Durability	19
■ Thermal performance	20
5. STRUCTURES AND COLOURS	22
■ Colours	22
■ Structures	23
6. APPLICATIONS	24
■ Parking garages and basements	24
■ Loggias and balconies	25
■ Technical rooms	26
■ Infrastructure	27
7. ACCESSORIES	29
■ Cover strip	29
■ MSP Anchor Fixing	30
■ DDS <i>plus</i> Concrete Screw	31
■ Wood screw	32
■ Metal screw	33
■ Herapaint	34
8. SOUND ABSORPTION VALUES	36
9. COLOUR GROUPS	38
10. SUSTAINABLE AND GREEN BUILDING RATING INITIATIVES	39
11. CERTIFICATES	40
12. SERVICE CHARTER FOR WOOD WOOL PANELS	41
13. SELECTION TABLE	42
14. HANDLING AND STORAGE	44



Heraklith® , the founder of the wood wool panel. The only genuine, The Original. Since 1908 we have continuously worked to improve our solutions. These innovations are not just about big, rigorous changes. Especially small adjustments can often make a big difference. Smart solutions for maximum result.

Knauf has wood wool production sites in Simbach (Germany), La Côte (France) and Zalaegerszeg (Hungary). In addition to three different types of massive panels, we also supply three different types of combi panels. The solution for a fine finishing is completed with specific fasteners and cover strips.

As we can offer a total solution for every project, we are the logical choice for architect, real estate owner and installer.



EXPERTISE

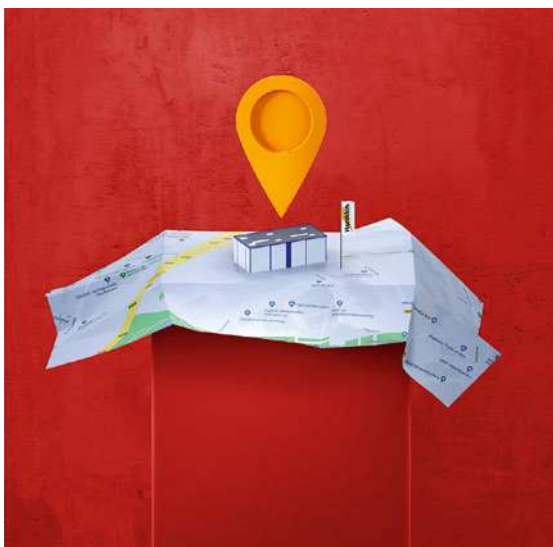
You find decades of expertise in every Heraklith® wood wool board. We are ahead when it comes to fire requirements, acoustics and thermal performance. We make our Heratekta boards with grey EPS as this offers a considerably better thermal performance than regular white EPS. With our Heratekta you can achieve the required performance with a slimmer board.

We are happy to share our expertise. For installers we offer trainings in our Heraklith® Experience Center, specific fasteners and clear processing instructions. For the architect and contractor we offer sound project advice and we test our products extensively in external laboratories.

INNOVATION

We always look for improvements to make our panels easier to handle and to reduce assembly time. After all, labor is scarce.

That is why we provide our wood wool combi panels Herafoam and the Heratekta with a handy tongue and groove connection. It allows you to install these wood wool panels not only faster, but also flatter.



SERVICE

Are you looking for a 360 wood wool project? Based on the project requirements, we provide thorough tailor-made advice to choose the right wood wool panel for your application.

Heraklith® thinks beyond the production of the wood wool boards. Based on our smart inventory Oosterhout (North Brabant) we can supply our fast movers with a short lead time so you can start finishing immediately.



UG 1



THE PROCESS: FROM TREE TO FINISHED PRODUCT

Heraklith® wood wool panels consist of PEFC certified wood wool fibers that are pressed together with a mineral binder to form a lightweight and multi-functional panel. Our modern production technologies and strict quality control guarantee a constant product quality to ensure the panels last for years.

Beside the wood wool, there are a number of other natural ingredients at the base of our mineral-bound Heraklith® wood wool panels: cement, lime and water. These ingredients are used in an ideal mixing ratio and dosed over the wood wool.

The wood wool blankets created in this process are put in moulds under high pressure. The chemical reaction of the natural ingredients can run freely.

The panels are then sawn to the required sizes. Finished with a bevel all around and if required we can spray the panels in any RAL colour to fit the design.



Cement and lime



Water



Wood fibres

BASIC

The Basic panel is a wood wool panel with a particularly robust industrial look.

STANDARD VERSION

The Basic panel is produced with PEFC certified wood and a fibre width of 2mm as standard. The panels will be delivered with straight edges and without any factory finishing.

DoP-code: 4010_Fibralith (www.heraklith.co.uk)

ACCESSORIES



MSP Anchor Fixing



DDS plus Concrete Screw

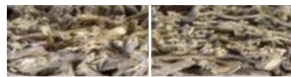


Wood screw



Metal screw

EDGE FINISHING



Square edges

ADVANTAGES

- ✓ Good sound absorption properties
- ✓ Natural, robust look
- ✓ Moisture and mould resistant

Mineral-bound wood wool untreated



PERFORMANCE



Fire classification
Bs1, d0



Sound absorption
 α_w max. 0.90



Thermal resistance
 $R_p = 0.30$

Thickness (mm)	R_p ($m^2 \cdot K/W$)	Product category	Length (mm)	Width (mm)	Panels/pallet	Pallet (m^2)	Art. No.
25	0.30	A	2000	600	80	96.00	901462

A2 DECORATIVE PANEL

Internationale code: Heraklith A2-M

A2 Decorative panel is a completely finished, square and smooth wood wool panel with an A2 fire rating. This panel has been specially developed for the acoustic and decorative finish of walls and ceilings. Moreover, concrete floors clad with A2 Decorative panels or when installed in a Richter grid ceiling system achieve a fire-resistance of 60 minutes*.

* Provided they are processed against solid concrete according to report 16210B or 16211B

STANDARD VERSION

The A2 Decorative panel is produced with PEFC certified wood and a fibre width of 2mm as standard. The panels are factory finished with a nature tone colour spray and bevelled all round.

DoP-code: W4302APCPR (www.dopki.com)

ACCESSORIES



MSP Anchor Fixing



DDS plus Concrete Screw



Wood screw



Metal screw

EDGE FINISHING



Bevelled

Thickness (mm)	R _d (m ² .K/W)	Product category	Length (mm)	Width (mm)	Panels/pallet	Pallet (m ²)	Art. No. Nature tone	Art. No. White
15	0.15	A	1200	600	70	50.40	664026	664027
25	0.25	A	1200	600	40	28.80	664028	664029
35	0.40	S	1000	600	30	18.00	664031	664032
50	0.55	S	1000	600	20	12.00	664033	664034

ADVANTAGES

- ✓ Up to 60 minutes fire resistance can be achieved*
- ✓ A2 fire rating, no drop formation and low smoke emissions when burning
- ✓ Good acoustic properties
- ✓ Moisture and mould resistant

Mineral-bound wood wool



PERFORMANCE



Fire classification
A2-s1,d0



Sound absorption
α_w max. 0.90



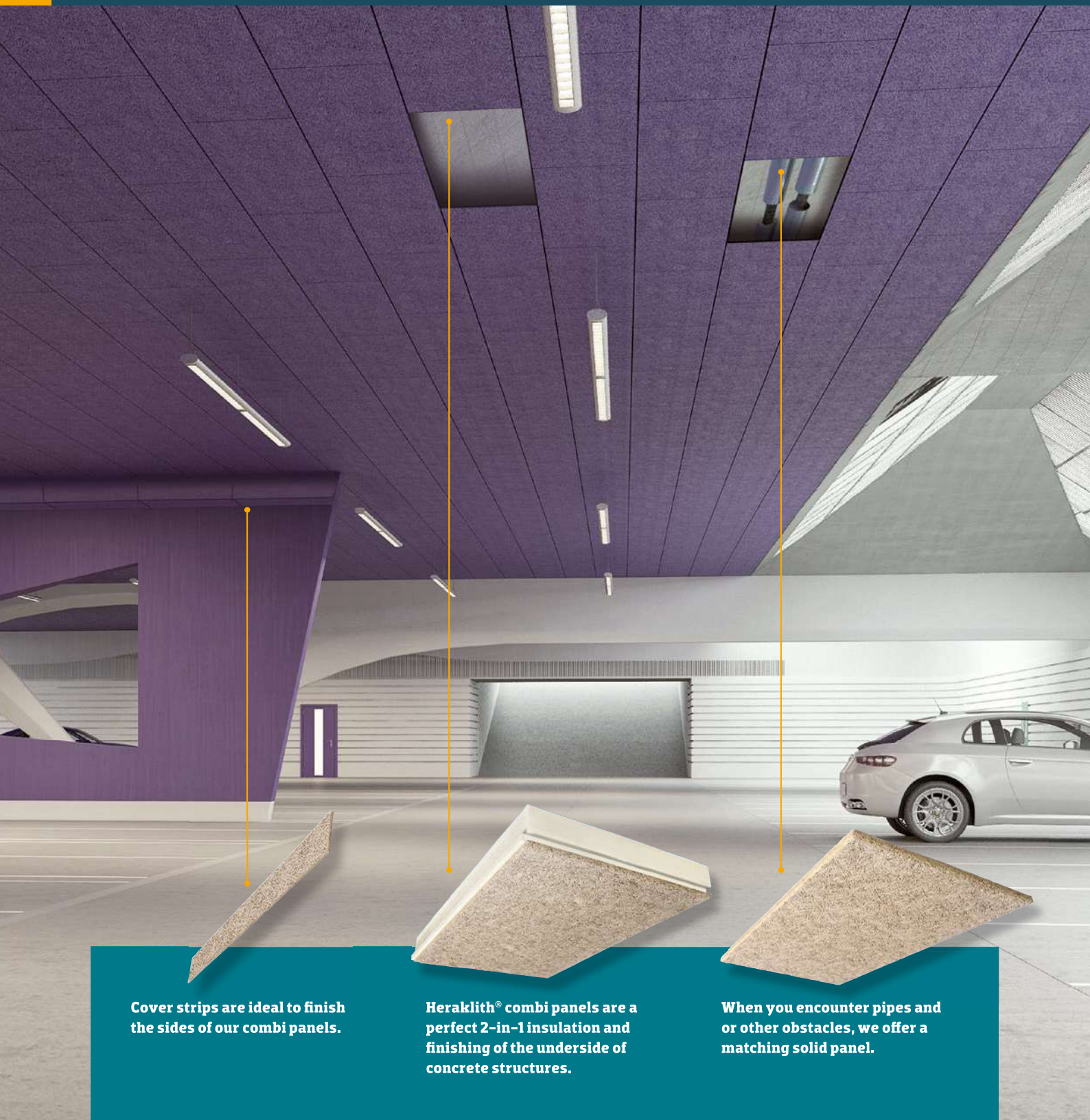
Thermal resistance
R₀ max. 0.55 (50mm)

Options

Options	Product category
Fibre width	1.0mm
Length (mm)	2000*
Colour	RAL
Panel variant	Inlay (D 25mm, B 595mm, L 1195mm)

* Not possible in 35 and 50mm thicknesses.





Cover strips are ideal to finish the sides of our combi panels.

Heraklith® combi panels are a perfect 2-in-1 insulation and finishing of the underside of concrete structures.

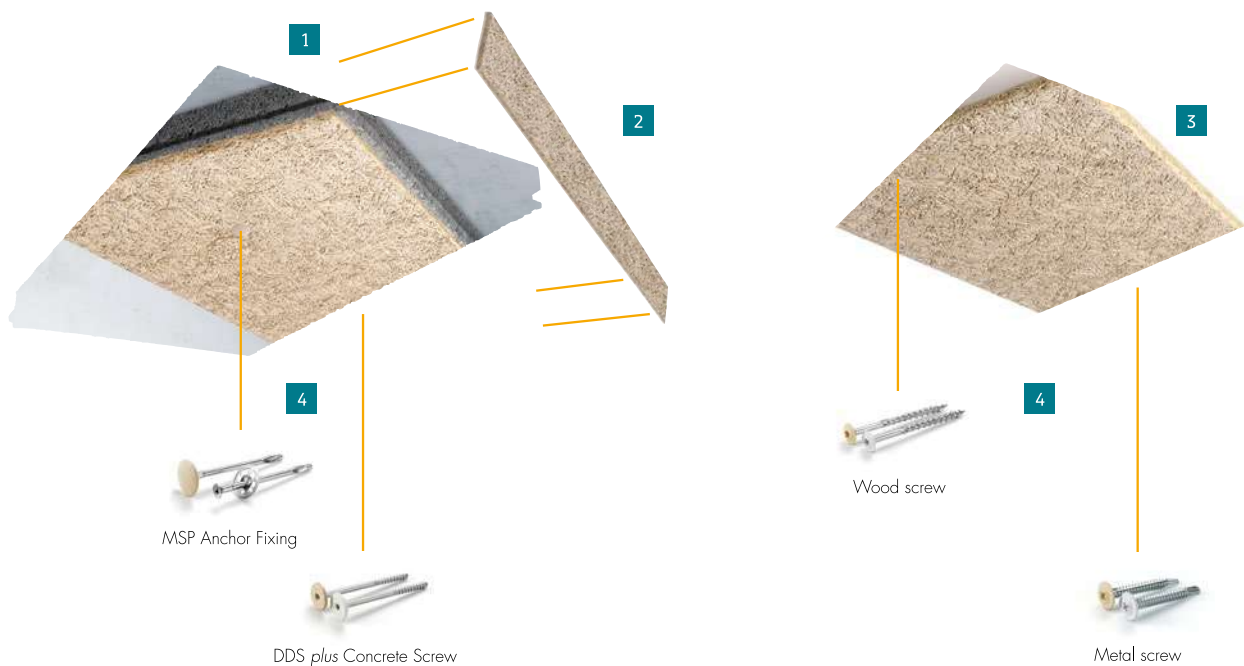
When you encounter pipes and or other obstacles, we offer a matching solid panel.

**No project is identical. It requires specific solutions.
Heraklith® offers a combination of panels and fasteners,
tailored to your wishes.**

A COMPLETE SOLUTION FOR EVERY FINISHING PROJECT

As you want to deliver a beautiful finish for every application, we offer a total solution for each combi wood wool board that consists of matching solid panels, cover strips and fixing materials.

The final finish therefore forms both in terms of dimensions and color a nice and uniform pattern. By perfectly matching the products at the production sites, deviation in color and panel size is minimized.



- 1 Combi panel with insulation of grey EPS, PIR or rock mineral wool
- 2 Cover strip that can be matched in colour and size to the used combi panel
- 3 Solid panel that can be matched in colour and structure to the combi panel
- 4 Fixing materials for any type of surface

HERATEKTA

Heratekta is a panel that combines wood wool with a grey insulation board that has a tongue and groove connection that supports very easy and one-man installation. This allows for an extra flat and extra quick mounting process.

STANDARD VERSION

The Heratekta panel is produced with PEFC certified wood and a fibre width of 2mm as standard. The panels are factory finished with a nature tone colour spray and bevelled all round.

ADVANTAGES

- ✓ Grey eps (λ 0,032) offers an average of 25% better thermal performance compared to white EPS
- ✓ 2 point mounting in combination with tongue and groove connection ensures an easy and flat mounting process
- ✓ Lightweight wood wool panel

Mineral-bound wood wool 10mm

Grey EPS (SE)



PERFORMANCE

DoP-code: 4010_HERATEKTA (www.heraklith.co.uk)



Fire classification
B-s1, d0



Sound absorption
 α_w 0.30



Thermal resistance
 R_D max. 6.05 (200 mm)

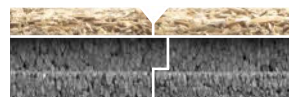
Thickness (mm)	R_D ($m^2 \cdot K/W$)	Product category	Length (mm)	Width (mm)	Panels/pallet	Pallet (m^2)	Art. No. Untreated	Art. No. White
50	1.35	S	985	590	44	25.57	653929	653946
80	2.30	A	985	590	26	15.11	654056	654058
100	2.90	A	985	590	22	12.79	654077	654072
125	3.70	A	985	590	18	10.46	654070	654078
150	4.45	A	985	590	14	8.14	654079	654081
175	5.25	A	985	590	12	6.97	654098	654138
200	6.05	S	985	590	10	5.81	654137	654136

Options**

		Product-categorie
Fibre width	1.0 mm	S
Colour	RAL	S

* For both Heratekta and Decorative Panel

EDGE FINISHING



Tongue and groove and bevelled

To complete your Heratekta project



DECORATIVE PANEL

The Decorative Panel has been especially developed to finish pipework and beams in ceilings that are being finished with the Heratekta combi board. It has a fibre width of 2.0mm.

The Decorative Panel is supplied unpainted as a standard in the natural, warm tones of wood.



Fire classification
B-s1, d0

DoP code: 4010_Fibralth (www.heraklith.co.uk)

Thickness (mm)	R _D (m ² .K/W)	Product category	Length (mm)	Width (mm)	Panels/pallet	Pallet (m ²)	Art. No. Untreated	Art. No. White
25	0.30	A	985	590	80	46,49	653941	653943



COVER STRIP

Especially for the finishing of this combi wood wool board we developed matching cover strips. See page 29 for more information.

Width (mm)	Suitable for Heratekta thickness (mm)	Product category	Thickness (mm)	Length (mm)	Strips/box	Art. No. Untreated	Art. No. White
45	50	S	15	985	20	658654	658655
75	80	A	15	985	20	658656	658657
95	100	A	15	985	10	658658	658690
120	125	A	15	985	10	658693	658694
145	150	A	15	985	10	658698	658699
170	175	A	15	985	10	658702	658703
195	200	S	15	985	10	658704	658705

ACCESSORIES



MSP Anchor Fixing



DDS plus Concrete Screw



Wood screw



Metal screw

HERAFOAM

Herafoam is a wood wool panel combined with a rigid foam insulation board that has a tongue and groove connection that supports very easy installation. This panel is very well suited for concrete ceilings and walls in renovation and new development projects that require high thermal performance and limited thickness.

STANDARD VERSION

Herafoam is produced with PEFC certified wood and a fibre width of 2mm as standard. The panels are delivered unpainted as a standard in the natural, warm tones of wood. Our panels are factory finished with lapjoints and bevelled all round. The insulation has a tongue and groove connection.

ADVANTAGES

- ✓ Lightweight wood wool panel
- ✓ Very high thermal insulation values with low panel thickness
- ✓ 2 point mounting in combination with tongue and groove ensures an easy and flat mounting process

Mineral-bound wood wool 10mm



PERFORMANCE



Fire classification
B-s1, d0



Sound absorption
 α_w 0.30



Thermal resistance
 R_D max. 7.10 (170 mm)

DoP-code: 4010_HERAFOAM (www.heraklith.co.uk)

Thickness (mm)	R_D (m ² .K/W)	Product category	Length (mm)	Width (mm)	Panels/pallet	Pallet (m ²)	Art. No. Untreated	Art. No. White
50	1.55	S	985	590	44	25.57	639600	639601
80	2.90	S	985	590	26	15.11	361532	361533
105	4.10	A	985	590	22	12.79	639666	639668
130	5.25	A	985	590	16	9.30	361543	361544
150	6.20	A	985	590	14	8.14	639630	639633
170	7.10	S	985	590	12	6.97	361550	361551

Options*

Options*		Product-categorie
Fibre width	1.0 mm	S
Colour	RAL	S

* For both Herafoam and Decorative Panel

EDGE FINISHING



Tongue and groove and bevelled

To complete your Herafoam project



DECORATIVE PANEL

The Decorative Panel has been especially developed to finish pipework and beams in ceilings that are being finished with the Herafoam combi board. It has a fibre width of 2.0mm.

The Decorative Panel is supplied unpainted as a standard in the natural, warm tones of wood.



Fire classification
B-s1, d0

DoP code: 4010_Fibralth (www.heraklith.co.uk)

Thickness (mm)	R _D (m ² .K/W)	Product category	Length (mm)	Width (mm)	Panels/pallet	Pallet (m ²)	Art. No. Untreated	Art. No. White
25	0.30	A	985	590	80	46,49	653941	653943



COVER STRIP

Especially for the finishing of this combi wood wool board we developed matching cover strips. See page 29 for more information.

Width (mm)	Suitable for Herafoam thickness (mm)	Product category	Thickness (mm)	Length (mm)	Strips/box	Art. No. Untreated	Art. No. White
45	50	S	15	985	20	658654	658655
75	80	A	15	985	20	658656	658657
100	105	A	15	985	10	658691	658692
125	130	A	15	985	10	658695	658697
145	150	S	15	985	10	658698	658699
165	170	S	15	985	10	658700	658701

ACCESSORIES



MSP Anchor Fixing



DDS plus Concrete Screw



Wood screw



Metal screw

TEKTALAN A2

Internationale code: Tektalan A2-E-31-035/2 - Tektalan A2-035/2

Tektalan A2 combines wood wool with a rock mineral wool insulation. This panel combines excellent fire-resistant properties with outstanding thermal and acoustic performance. Extensive international fire tests have shown that solid concrete floors covered with Tektalan A2 panels, can provide 180 minutes of fire resistance*. Tektalan A2 works as a heat shield, ensuring the integrity of the structure for a longer period in the event of a fire.

* Provided they are processed against solid concrete according to report 18203 / 18204

STANDARD VERSION

The Heraklith® Tektalan A2 is produced with PEFC certified wood and a fibre width of 2mm as standard. The panels are factory finished with a nature tone colour spray and bevelled all round.

ADVANTAGES

- ✓ Rock mineral wool at the back provided with glass veil: easy to process and less risk of damage
- ✓ Up to 180 minutes fire resistance can be achieved
- ✓ A2 fire rating, no drop formation and low smoke emissions when burning
- ✓ Outstanding sound absorption properties

Mineral-bound wood wool 10mm

Stone wool



PERFORMANCE



Fire classification
A2-s1,d0



Sound absorption
 α_w 0.80



Thermal resistance
 R_D max. 6.40 (225 mm)

DoP-code: W4302CPCPR (www.dopki.com)

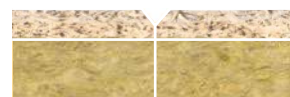
Thickness (mm)	R_D (m ² .K/W)	Product category	Length (mm)	Width (mm)	Panels/pallet	Pallet (m ²)	Art. No. Untreated	Art. No. White
50	1.25	A	1000	600	22	13.20	664012	664013
75	2.00	A	1000	600	14	8.40	664008	664009
100	2.75	A	1000	600	11	6.60	664010	664011
125	3.50	A	1000	600	8	4.80	664014	664016
150	4.20	A	1000	600	7	4.20	664017	664015
175	4.95	S	1000	600	6	3.60	664018	664019
200	5.70	S	1000	600	5	3.00	664021	664020
225	6.40	S	1000	600	5	3.00	664022	664023

Options*

Options*		Product category
Fibre width	1.0 mm	S
Colour	RAL	S

* For both Tektalan and A2 Afbouwpaneel

EDGE FINISHING



Bevelled

To complete your Tektalan A2 project



A2 DECORATIVE PANEL

International code: Heraklith A2-M

The Decorative Panel has been especially developed to finish pipework and beams in ceilings that are being finished with the Tektalan combi board. It has a fibre width of 2.0mm. The Decorative Panel is supplied unpainted as a standard in the natural, warm tones of wood.



Fire classification
A2-s1, d0

DoP code: W43012APCPR (www.dopki.com)

Thickness (mm)	R _D (m ² .K/W)	Product category	Length (mm)	Width (mm)	Panels/pallet	Pallet (m ²)	Art. No. Nature tone	Art. No. White
25	0.25	A	1200	600	40	28.80	664028	664029



COVER STRIP

Especially for the finishing of this combi wood wool board we developed matching cover strips. See page 29 for more information.

Width (mm)	Suitable for Tektalan A2 thickness (mm)	Product category	Thickness (mm)	Length (mm)	Strips/box	Art. No. Nature tone	Art. No. White
45	50	S	12	1000	20	664066	664097
70	75	A	12	1000	20	664068	664099
95	100	A	12	1000	10	664069	664101
120	125	A	12	1000	10	664070	664102
145	150	A	12	1000	10	664071	664103
170	175	S	12	1000	10	664072	664104
195	200	S	12	1000	10	664073	664105
220	225	S	12	1000	10	664074	664106

ACCESSORIES



MSP Anchor Fixing



DDS plus Concrete Screw



Wood screw



Metal screw

The Heraklith® range includes panels for every ceiling and wall application. Depending on the requirements of the building area we will advise the optimal Heraklith® panel. This consideration will be made based on the product properties: fire resistance, sound absorption and thermal insulation.

FIRE RESISTANCE

Construction materials and buildings must comply with fire safety regulations. It is important to use high quality material. The choice of insulation can make the difference between life and death during a fire. That is why we put safety first at Heraklith®.

All panels have standard fire class B and a number of panels can even be supplied in fire class A2. Heraklith® panels do not melt, do not produce burning parts (d0) and hardly generate any smoke (s1). A safe idea.



Fire class

Fire class A1	Non combustible
Fire class A2	Hardly combustible
Fire class B	Limited combustible
Fire class C	Combustible
Fire class D	Good combustibility
Fire class E	Very combustible
Fire class F	Extremely combustible, not tested
Smoke opacity s1	Very weak smoke production
Smoke opacity s2	Limited smoke production
Smoke opacity s3	Heavy smoke production
Droplet d0	Nonexistent ignited droplets
Droplet d1	Continued ignited droplets after 10s
Droplet d2	Ignited droplets

FIRE RESISTANCE

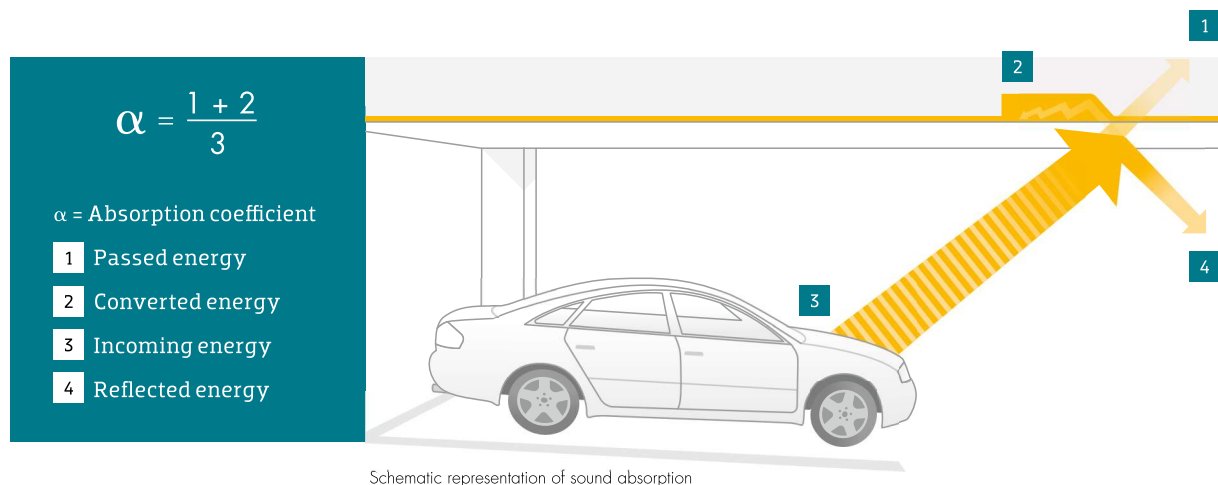
Construction materials and buildings must comply with fire safety regulations. It is important to use high quality material. The choice of insulation can make the difference between life and death during a fire. That is why we put safety first at Heraklith®. All panels have standard fire class B and a number of panels can even be supplied in fire class A2.

Heraklith® panels do not melt, do not produce burning parts (d0) and hardly generate any smoke (s1). A safe idea.

ACOUSTIC PERFORMANCE

Protection from noise plays an important role in the comfort of any modern living or working environment. Heraklith® offers a wide variety of insulation products to help create quiet and undisturbed home and workspaces, especially those above underground garages, technical rooms or near sources of potentially disturbing noise.

The open surface structure of Heraklith® wood wool insulation boards provides outstanding acoustical insulation properties.

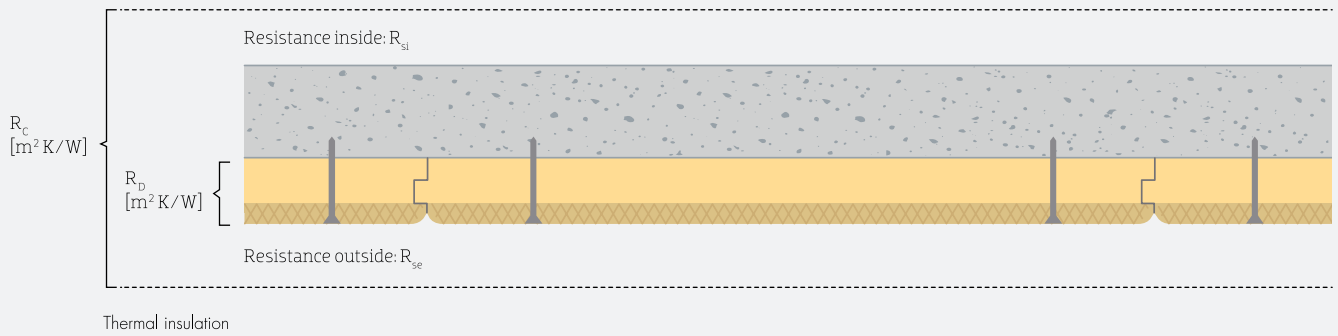


DURABILITY

The best insulation products are created and used with commitment to environmental responsibility and Heraklith® wood wool insulation boards are no exception. They are made from PEFC certified spruce (Epicca) wood.

During production the long, fine spruce and poplar wood are pressed with a mineral bonding agent to create a light, multifunctional insulation board that is easy on the environment in both in its production and use phases.

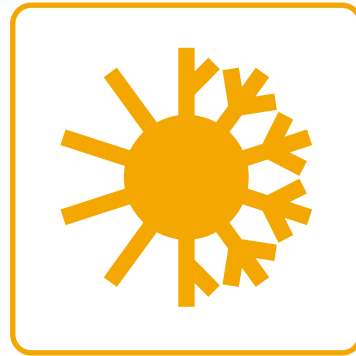




THERMAL PERFORMANCE

The most important reasons to insulate a building space include the need to improve its thermal level of comfort and reduce its energy use. Insulation lowers the cost of heating and cooling and reduces CO₂ emissions. When used in buildings thermal insulation materials provide a solid return on investment, both for new build and renovation applications.

Heraklith® offers a wide variety of product solutions for thermal insulation applications, including multilayer boards that combine wood wool insulation with rock mineral wool insulation to ensure excellent thermal insulation for living and work spaces.







Heraklith® wood wool insulation boards for ceiling and wall finishes are durable and reliable. The different edging, structures and colours offer besides functionality a true freedom of design.

Therefore our wood wool boards find their way as effective and beautiful element in many sectors such as offices, education and health care sectors, shops, industrial buildings and the modern housing.

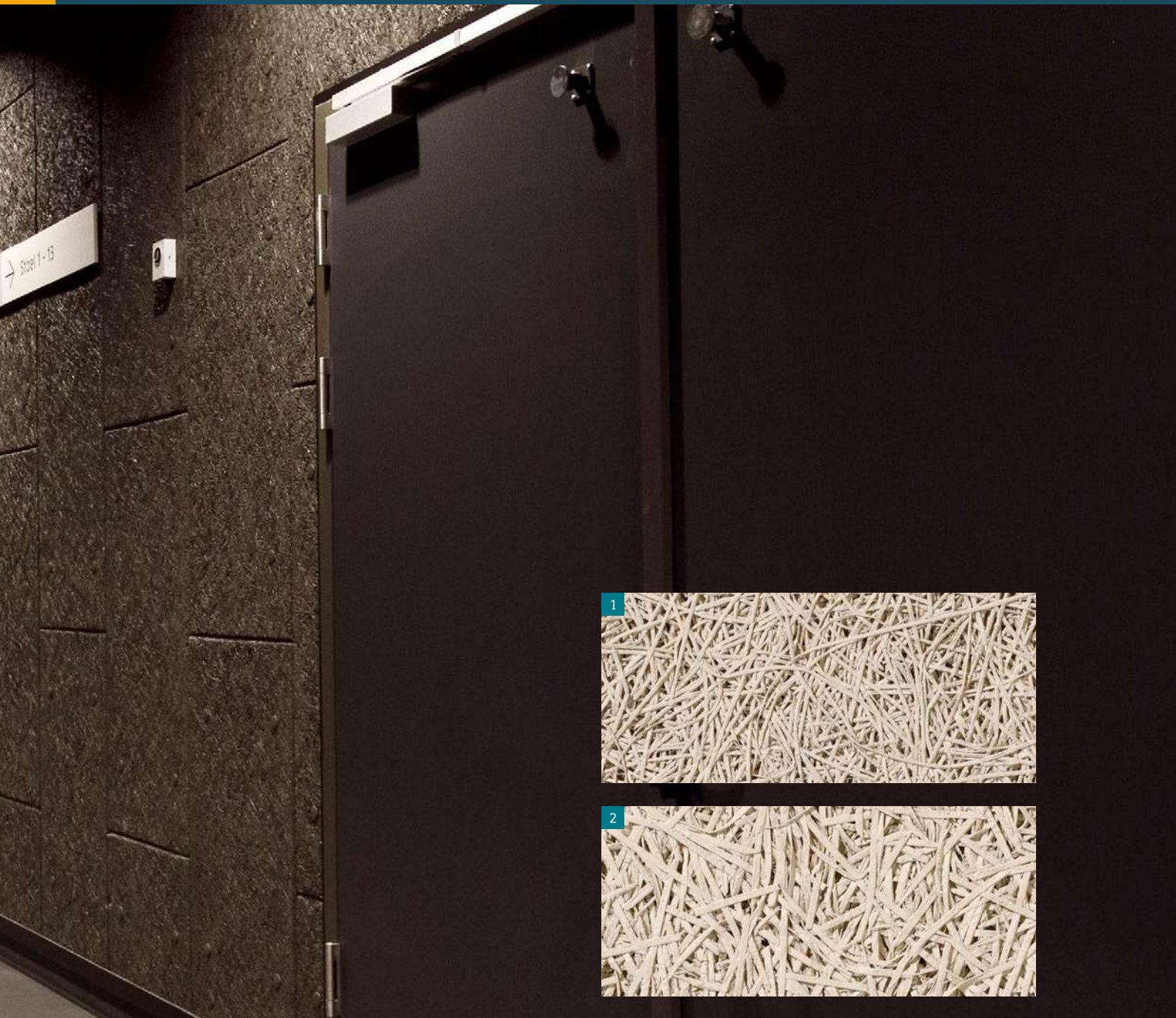
COLOURS

Heraklith® wood wool panels can be supplied in a number of ways. Some wood wool panels are delivered unpainted as standard in the natural, warm colours of wood (the combi panels Herafoam and Heratekta) or with a robust, industrial look (the Basic panel).

Most wood wool panels can be sprayed in our factories in a RAL colour of your choice. We use water-based paint. On page 38 you can find a complete overview of our options.

All Heraklith® wood wool panels are ready for use and do not require extra treatment. Each panel is insensitive to moisture or mold. Heraklith(R) offers sustainable materials for the long term use.





STRUCTURES

Heraklith® wood wool panels can be supplied in different structures and colours* by choosing a specific width of the wood fibre. The wood wool surface can thus vary from robust to fine.

- 1 Nature tone, fibre width 1.0mm
- 2 Nature tone, fibre width 2.0mm
- 3 Unpainted, fibre width 1.0mm
- 4 Unpainted, fibre width 2.0mm

*The Tektalan wood wool panel and A2 Decorative panel are finished in nature teint as a standard. Herafaom, Heratekta and their matching Decorative panel are supplied unpainted as a standard.

Those who think of wood wool panels think of Heraklith®. Heraklith® offers wood wool panels that are functional, durable, aesthetic and user-friendly. Our custom-made panels can be fully compliant with the required performances and provide a safe, comfortable and attractive finished building.

PARKING GARAGES AND BASEMENTS

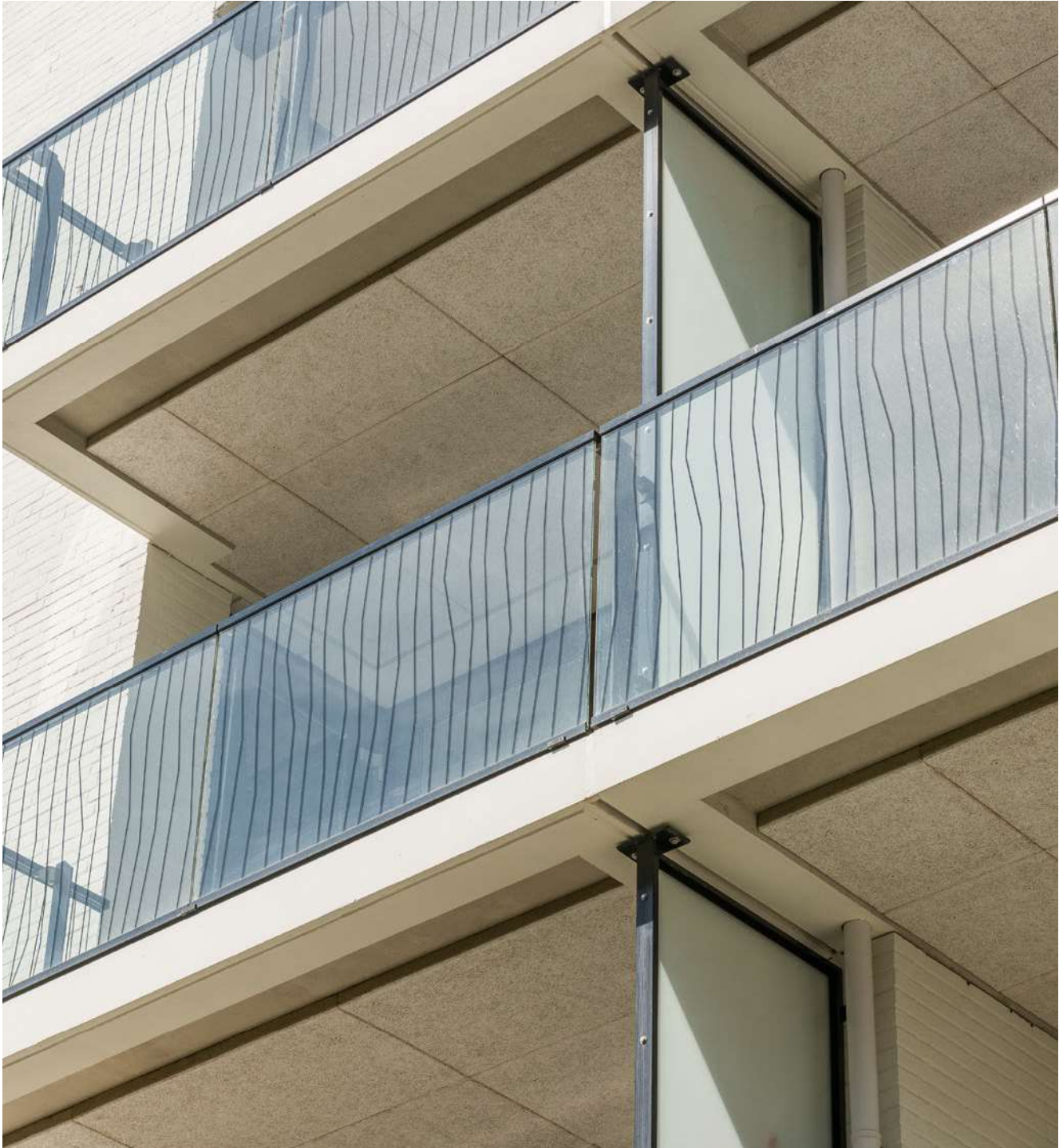
Heraklith® offers an excellent all-in-one solution for the insulation of ceilings and walls in parking garages and multistorey car parks. A well-designed parking space responds to construction requirements and the overall requirements of the facilities where the construction is part of.

Thermal and acoustic insulation prevent cold and sound to influence surrounding spaces. Safety is at least as important: in case of a fire the construction needs to be fire safe to prevent the source of the fire to

cause any instability to the construction. Our Tektalan panels can work as a heat shield and do not contribute to the reproduction of the fire.

For residential complexes it is also important to take into account thermal loss. 10% of the heat can be lost through uninsulated floors. Heraklith® wood wool panels reduce the heat loss, provide protection against fire and help - thanks to optimum sound absorption - to achieve good acoustics.





LOGGIAS AND BALCONIES

Heraklith® panels are a perfect solution as ceiling and wall covering for semi-outdoor applications such as loggias and balconies in multi family buildings. With a living space above a constructive element, it may be desirable to finish the ceiling of the

underlying balcony with a thermal and / or acoustic insulation. The panels are optimal resistant to weather influences.

TECHNICAL ROOMS

Thanks to the product characteristics Heraklith® wood wool insulation materials are ideal for use in technical rooms. The superior acoustic insulation capabilities

of the Tektalan range make it a great choice for insulating the walls and ceilings of technical rooms where noise can become an issue.





**The possibilities are endless.
We are happy to advise you on
your application.**

INFRASTRUCTURE

Trains and subways can be a significant source of noise nuisance. Railway managers who moor and manage a future proof and comfortable infrastructure

around train stations and metro lines require sound-absorbing insulation products to protect its environment against excessive noise.



UG-01



COVER STRIP

International code: Heraklith A2-C

Heraklith® offers a sophisticated total solution for the aesthetic finish of ceilings and walls. The Heraklith system consists of separate combi and solid wood wool panels, cover strips and the corresponding accessories. By gluing a closing strip on the end or on the long side of a combi panel, you ensure a beautifully finished wall or ceiling.

Cover strips can be supplied in colour and structure of the chosen combi wood wool panel. Ask us for the options. We are happy to advise you!

Options		Product category
Fibre width	1,0 mm	S
Colour	RAL	S



HERATEKTA AND HERAFOAM

Width (mm)	Suitable for Herafoam and Heratekta thickness (mm)	Product category	Thickness (mm)	Length (mm)	Strips/box	Art. No. Untreated	Art. No. White
45	50	S	15	985	20	658654	658655
75	80	A	15	985	20	658656	658657
95	100	A	15	985	10	658658	658690
100	105	A	15	985	10	658691	658692
120	125	A	15	985	10	658693	658694
125	130	A	15	985	10	658695	658697
145	150	A	15	985	10	658698	658699
165	170	S	15	985	10	658700	658701
170	175	A	15	985	10	658702	658703
195	200	S	15	985	10	658704	658705

TEKTALAN A2

Width (mm)	Suitable for Tektalan A2 thickness (mm)	Product category	Thickness (mm)	Length (mm)	Strips/box	Art. No. Nature tone	Art. No. White
45	50	S	12	1000	20	664066	664097
70	75	A	12	1000	20	664068	664099
95	100	A	12	1000	10	664069	664101
120	125	A	12	1000	10	664070	664102
145	150	A	12	1000	10	664071	664103
170	175	S	12	1000	10	664072	664104
195	200	S	12	1000	10	664073	664105
220	225	S	12	1000	10	664074	664106

MSP ANCHOR FIXING

Heraklith® | MSP Anchor Fixings (MSP) are specifically suited for the mounting of wood wool panels directly to normal concrete (2000-2600 kg/m³). The exceptionally high extraction value combined with a low anchoring depth ensure reliable and long-lasting mounting.

STANDARD VERSION

The MSP Anchor Fixings are made of galvanized steel and are supplied as standard with a mounting tool and accompanying cover caps. The caps are provided with a nice, flat and fine wood wool structure for a decorative finish. They are available in the most common colours. Moreover, the caps can be painted in all possible RAL colours.

Plug length (mm)	Panel thickness to (mm)	Units / pack	Art. No.
50	25	100	2435322
60	35	100	2441449
75	50	100	2435323
95	70	100	2440019
100	75	100	2435324
105	80	100	2440020
110	85	100	2440021
115	90	100	247357
125	100	100	2435325
130	105	100	2440022
135	110	100	2440023
140	115	100	2440372
150	125	100	2435326
155	130	100	2440024
165	140	100	2440026
170	145	100	2440027
175	150	100	2435327
185	160	100	2440028
190	165	100	2440374
195	170	100	2440029
200	175	100	597716
210	185	100	403121
225	200	100	403122

ADVANTAGES

- ✓ Quick hammer set installation
- ✓ Simple installation: pre-drill and secure
- ✓ Minimal anchorage depth
- ✓ Covering caps with wood fibre structure for decorative finish



Covering caps

Kleur	Aantal / pak	Art. No.
Nature tone	100	2435329
White	100	2435328

Assembly attachment

Art. No.

2435331



Drilling

Drill bit length	Drill bit diameter	Art. No.
160 mm	6,5	2436309
210 mm	6,5	2436310
260 mm	6,5	2436311
310 mm	6,5	2436312



DDS PLUS CONCRETE SCREW

Heraklith® | DDS *plus* concrete screws are specifically suited for mounting wood wool panels directly to typical concrete constructions (2000-2600 kg/m³). Comprehensive international fire testing has shown that combining DDS *plus* screws with the Heraklith Tektalan A2 or the A2 Decorative panel results in excellent performance in fire-resistant applications.

STANDARD VERSION

The concrete screw consists of steel with a corrosion class C3. The screw can therefore be used in an outdoor environment that is not directly exposed to the elements. The screws come standard in the colours white and nature tone (RAL 1015).

ADVANTAGES

- ✓ Plastic screw head cap with wood fibre structure for decorative finish
- ✓ Simple installation: pre-drill and screw in
- ✓ Minimal anchorage depth
- ✓ Can be used for fire-resistant applications
- ✓ Available in various RAL colours upon request



Screw length (mm)	Panel thickness to (mm)	Units / pack	Art. No. Nature tone	Art. No. White
50	25	100	416810	596858
75	50	100	416812	416798
85	60	100	416813	416802
100	75	100	416814	416803
110	85	100	596896	596895
125	100	100	416815	416804
150	125	100	416816	416805
175	150	100	416817	416806
200	175	100	416818	416807
225	200	100	416819	416808
250	225	100	416820	416809

Different colours upon request.

WOOD SCREW

Heraklith® | Wood screws are specifically suited for mounting solid wood wool panels to wooden structures.

STANDARD VERSION

The wood screw is made of galvanized steel with a standard surface treatment in corrosion class C2. The screws have a matt powder-coated decorative finish and come standard in the colours white and nature tone (RAL 1015).

ADVANTAGES

- ✓ Plastic screw head cap with wood fibre structure for decorative finish
- ✓ Simple installation: pre-drill and screw in
- ✓ Minimal anchorage depth
- ✓ Can be used for fire-resistant applications
- ✓ Available in various RAL colours upon request



Screw length (mm)	Panel thickness to (mm)	Units / pack	Art. No. Nature tone	Art. No. White
50	25	200	596718	596724
60	35	200	596720	596726
80	55	200	596722	596727
100	75	200	596723	596728

Different colours upon request.

Please check our Processing Instructions for each type of surface on www.heraklith.co.uk

METAL SCREW

Heraklith® | Metal screws are specifically suited for fixing solid wood wool panels to metal CD profiles.

STANDARD VERSION

The metal screw is made of galvanized steel with a corrosion class C2. The screws have a matte, powder-coated decorative finish and come standard delivered in the colours white and nature tone (RAL 1015).

ADVANTAGES

- ✓ Simple installation: no pre-drilling necessary
- ✓ Special drill tip for quick installation in metal profiles
- ✓ Minimal anchorage depth
- ✓ Available in various RAL colours upon request



Screw length (mm)	Panel thickness to (mm)	Units / pack	Art. No. Nature tone	Art. No. White
38	26	200	609452	609453
50	38	200	610420	610419
70	58	200	610422	610421

Different colours upon request.

HERAPAIN

Paint in spray can to touch up parts of the wood wool coating.

All our panels are produced with special care. Panels finished with a dark colour though have to be processed extra carefully and you must take into account post-treatment. Heraklith can optionally provide sprays with corresponding RAL colours.



Colour	Contents/can	Units/pack	Art. No.
Nature tone (R1015)	400 ml	6	655453
White (R9003)	400 ml	6	655452

Different colours upon request.





SOUND ABSORPTION VALUES

SOLID PANELS

Heraklith® (A2 Decorative panel/ Basic panel)

Construction + panel type	F(Hz)	125	250	500	1000	2000	4000	α_w	NRC	SAA	Report number
1. Concrete 2. Heraklith® (2mm), 25mm	α_s (1/1 octaaf)	0.06	0.13	0.27	0.63	0.91	0.66	0.35	0.50	-	A2518-3-RA-001
1. Concrete 2. Heraklith® (1mm), 25mm	α_s (1/1 octaaf)	0.08	0.16	0.31	0.60	0.94	0.72	0.35	0.50	-	A2828-2E-RA-001
1. Concrete 2. Cavity, 175mm 3. Heraklith® (2mm), 25mm	α_s (1/1 octaaf)	0.21	0.56	0.65	0.52	0.65	0.82	0.60	0.60	-	A 2828-2E-RA001
1. Concrete 2. Cavity, 135mm 3. Mineral wool, 40mm 4. Heraklith® (2mm), 25mm	α_s (1/1 octaaf)	0.44	0.87	0.87	0.90	0.84	0.95	0.90	0.85	-	A 2828-2E-RA001
1. Concrete 2. Heraklith® (2mm), 35mm	α_s (1/1 octaaf)	0.09	0.16	0.35	0.81	0.77	0.76	0.40	0.50	-	A2518-3-RA-001
1. Concrete 2. Heraklith® (2mm), 50mm	α_s (1/1 octaaf)	0.15	0.33	0.62	0.87	0.75	0.85	0.60	0.65	-	A2518-3-RA-001

For all panels the norm ISO 11654/ASTMC423 is applicable

SOUND ABSORPTION VALUES

COMBI PANELS

Tektalan A2*

Panel type	F(Hz)	125	250	500	1000	2000	4000	α_w	NRC	SAA	Report number
Tektalan A2 (2mm), 50 mm	α_s (1/1 octaaf)	0.30	0.80	1.00	0.95	0.85	0.90	0.95	0.90	0.90	M104343-2
Tektalan A2 (2mm), 75 mm	α_s (1/1 octaaf)	0.55	0.80	0.80	0.85	0.80	0.80	0.85	0.80	0.83	M104343-4
Tektalan A2 (2mm), 100 mm	α_s (1/1 octaaf)	0.60	0.70	0.75	0.80	0.75	0.85	0.80	0.75	0.75	M104343-14
Tektalan A2 (2mm), 150 mm	α_s (1/1 octaaf)	0.60	0.65	0.80	0.85	0.85	1.00	0.85	0.80	0.79	M104343-5
Tektalan A2 (1mm), 50 mm	α_s (1/1 octaaf)	0.30	0.80	0.95	0.90	0.85	0.90	0.90	0.90	0.89	M104343-6
Tektalan A2 (1mm), 75 mm	α_s (1/1 octaaf)	0.60	0.90	0.90	0.90	0.85	0.85	0.90	0.90	0.88	M104343-3
Tektalan A2 (1mm), 125 mm	α_s (1/1 octaaf)	0.55	0.65	0.75	0.80	0.80	0.85	0.80	0.75	0.75	M104343-3

* Directly mounted to concrete

For all panels the norm ISO 11654/ASTMC423 is applicable

Heratekta*

Panel type	F(Hz)	125	250	500	1000	2000	4000	α_w	NRC	SAA	Report number
Heratekta (2mm), 50mm	α_s (1/1 octaaf)	0.05	0.22	0.23	0.26	0.45	0.78	0.30	0.25	0.29	A 3598-4E-RA001
Heratekta (2mm), 100mm	α_s (1/1 octaaf)	0.17	0.29	0.21	0.23	0.41	0.81	0.25	0.25	0.29	A 3598-4E-RA001
Heratekta (2mm), 150mm	α_s (1/1 octaaf)	0.24	0.29	0.20	0.25	0.46	0.84	0.25	0.25	0.30	A 3598-4E-RA001

* Directly mounted to concrete

Herafoam*

Panel type	F(Hz)	125	250	500	1000	2000	4000	α_w	NRC	SAA	Report number
Herafoam (2mm), 50mm	α_s (1/1 octaaf)	0.03	0.08	0.22	0.29	0.39	0.75	0.30	0.20	0.24	A 3598-3E-RA001
Herafoam (2mm), 105mm	α_s (1/1 octaaf)	0.04	0.11	0.28	0.20	0.40	0.77	0.30	0.25	0.25	A 3598-3E-RA001
Herafoam (2mm), 150mm	α_s (1/1 octaaf)	0.07	0.19	0.28	0.23	0.43	0.80	0.30	0.25	0.28	A 3598-3E-RA001

* Directly mounted to concrete

COLOUR GROUPS

RAL	Colour groups	RAL	Colour groups	RAL	Colour groups
RAL 1000	1	RAL 4001	3	RAL 7000	1
RAL 1001	1	RAL 4002	3	RAL 7001	1
RAL 1002	1	RAL 4003	3	RAL 7002	2
RAL 1003	3	RAL 4004	3	RAL 7004	3
RAL 1004	3	RAL 4005	3	RAL 7006	2
RAL 1005	3	RAL 4006	3	RAL 7008	2
RAL 1006	3	RAL 4007	3	RAL 7012	2
RAL 1007	3	RAL 4008	3	RAL 7013	3
RAL 1011	2	RAL 4009	3	RAL 7015	1
RAL 1012	2	RAL 5000	2	RAL 7016	3
RAL 1013	1	RAL 5002	3	RAL 7021	2
RAL 1014	1	RAL 5003	3	RAL 7023	2
RAL 1015	1	RAL 5004	3	RAL 7024	3
RAL 1016	2	RAL 5005	3	RAL 7026	3
RAL 1017	2	RAL 5007	3	RAL 7030	1
RAL 1018	2	RAL 5008	3	RAL 7031	2
RAL 1019	1	RAL 5009	3	RAL 7032	1
RAL 1020	1	RAL 5010	3	RAL 7033	1
RAL 1021	3	RAL 5012	3	RAL 7034	1
RAL 1023	2	RAL 5013	3	RAL 7035	1
RAL 1024	1	RAL 5014	3	RAL 7036	1
RAL 1027	2	RAL 5015	3	RAL 7037	1
RAL 1028	3	RAL 5017	3	RAL 7038	1
RAL 1032	3	RAL 5018	3	RAL 7040	1
RAL 1033	3	RAL 5019	3	RAL 7042	1
RAL 1034	2	RAL 5020	3	RAL 7043	3
RAL 2000	3	RAL 5021	3	RAL 7044	1
RAL 2001	3	RAL 5022	3	RAL 7045	1
RAL 2002	3	RAL 5024	1	RAL 7046	3
RAL 2003	3	RAL 6000	2	RAL 7047	1
RAL 2004	3	RAL 6001	3	RAL 8000	3
RAL 2011	3	RAL 6003	2	RAL 8003	3
RAL 2012	3	RAL 6005	2	RAL 8007	3
RAL 3000	3	RAL 6006	2	RAL 8012	3
RAL 3001	3	RAL 6010	3	RAL 8014	3
RAL 3002	3	RAL 6011	2	RAL 8015	3
RAL 3003	3	RAL 6012	2	RAL 8017	3
RAL 3004	3	RAL 6013	2	RAL 8019	3
RAL 3005	3	RAL 6014	3	RAL 8022	3
RAL 3009	3	RAL 6015	3	RAL 8023	2
RAL 3011	3	RAL 6016	3	RAL 8025	2
RAL 3012	3	RAL 6017	3	RAL 8028	3
RAL 3013	3	RAL 6018	2	RAL 9001	1
RAL 3014	2	RAL 6019	1	RAL 9002	1
RAL 3015	2	RAL 6021	1	RAL 9003	--
RAL 3016	3	RAL 6024	2	RAL 9004	3
RAL 3017	2	RAL 6026	2	RAL 9005	3
RAL 3018	3	RAL 6027	1	RAL 9006	Aluminum 3
RAL 3020	3	RAL 6028	3	RAL 9007	Aluminum 3
RAL 3022	3	RAL 6029	3	RAL 9010	1
RAL 3027	3	RAL 6032	3	RAL 9011	3
		RAL 6034	3	RAL 9016	1
				RAL 9017	3
				RAL 9018	1

Each Heraklith® panel is unique. Wood wool gives each panel the typical, open fiber structure. Especially with factory-finished colours that contrast with the natural colour of wood the colour of the wood wool will be visible under certain angles. This is inherent to the production process of this natural product. We can not guarantee a 100% coverage.

For the colour groups 1 to 3, a minimum purchase of 250 m² applies.

The colours in this table serve as an indication and inspiration. We can not accept any liability for any colour difference or damage that may result from an error in this issue.

Colour groups

1
2
3
RAL 9003



Parke

UG 2



Sustainability is a core concept throughout our process. We fully realize that, as an international company, we have a social responsibility. Our innovative products ensure energy savings from an environmentally conscious approach. Heraklith® panels are produced sustainably and fit seamlessly with the sustainability certificates for buildings.



WELL

The WELL Building Standard contains 100 requirements to achieve a healthy, comfortable working environment. The quality mark is the result of 7 years of scientific research.

WELL specifically zooms in on the indoor environment of a building in relation to the health of the users of this building.



REACH

REACH Regulation (registration, evaluation, authorization and restriction of chemicals) places responsibility on industry to manage the risks from chemicals and to provide safety information on the substances. Manufacturers and importers are required to gather information on the properties of their chemical substances, which will allow their safe handling, and to register the information in a central database.

Heraklith products strictly comply with REACH regulation. This compliance provide additional points through the building rating schemes like for example the new LEED version 4.




BREEAM

International New Construction is a voluntary standard that defines high performance green buildings which are healthier, more environmentally responsible and more profitable structures. Using independent assessors, BREEAM examines criteria covering a range of issues in sections that evaluate: management processes, health and wellbeing, energy, transport, water, materials, waste, land use and ecology, pollution and innovation.

Heraklith® products have an environmental product declaration (EPD) and other performance certificates. These show that we are pioneers in product sustainability. Our insulation materials contribute to greener, more sustainable buildings.

CRG



Bureau CRG publishes a database with, among others, verified quality statements of products and systems for the construction or installation sector (formerly ISSO). The data from these statements are used in the calculation of an Energy Performance Coefficient (EPC) for new construction or the Energy Index (EI) of an existing building.

PEFC



The Programme for the Endorsement of Forest Certification (PEFC) is an international non-profit organization dedicated to promoting sustainable forest management. Heraklith® is proud to display the PEFC label on its wood wool insulation products.

QUALITY AND ENVIRONMENTAL MANAGEMENT




The Knauf Insulation factories meet the most important international standards in the areas of quality and environmental management, energy management and health and safety management. Bureau Veritas tests our locations on the various standards achieved such as ISO 9001, ISO 14001, ISO 50001 and OHSAS 18001.

BLUE ANGEL




Blue Angel is a voluntary program that is known as the world's oldest environmental label for products and services. The fact that the quality mark also applies on Heraklith® wood wool products shows that our products have positive environmental characteristics.

KEYMARK




You can recognize insulation material at the Keymark logo ensuring that it is independently controlled and meets high standards. All declared properties are checked regularly. The quality mark is awarded by independent accredited institutes on behalf of CEN and DIN CERTCO, a joint venture of TUV Rheinland and DIN, the German Institute for Standardization.

ENVIRONMENTAL PRODUCT DECLARATION (EPD)



Life Cycle Analyses (LCA) are performed on our entire Heraklith product line of wood wool insulation boards to assess their impacts on the environment and to keep ourselves at the forefront of environmental responsibility in our products and operations. And each LCA results in a full Environmental Product Declaration (EPD) that helps to assess the impact of using the boards in their construction applications.

ZONE VERTE A+



Excell is an analytical laboratory specialised in the food industry. Based on their criteria they created a quality label. The "Zone Verte Excell" label gives an indication of the sanitary quality, the level of indoor air quality and the composition and quality of the products stored or treated in the buildings concerned. In addition to paint products the label also takes into account, more generally, the direct or indirect emissions of coating materials.

Service expectations vary from one client to another. To be able to tailor our service to meet your particular wishes and needs, we have put together a service charter for you. This document describes our main service elements. If you have any questions after reading it, please do not hesitate to contact our Customer Service Department

Ordering

Orders can be placed by e-mail or fax. We will need the following information from you to be able to process an order properly:

- Product description
- The quantity required, the price agreed, plus a reference to any quotation or framework agreement applicable and the delivery conditions agreed on with your sales contact
- Order number (PO)
- Preferred delivery date
- Specific wishes (e.g. delivery instructions)

Unloading

The first hour of unloading time is free of charge for all deliveries. However, if the driver is forced to wait for more than one hour, (i) we will be forced to charge an extra fee of € 35.00 per additional half hour and (ii) the driver will decide how long he is able to wait given his schedule for the day. After unloading, the delivery note must be signed. It states the time of delivery, the number of products delivered and the quality of the delivery (visual inspection for signs of damage). Any visible damage, or other irregularities, observed upon delivery should be recorded on the delivery note.

Express delivery

If products are in stock, it is possible to expedite delivery by choosing the express delivery option. Certain costs may apply, depending on your specific wishes. Naturally, we will only initiate your express delivery once you have agreed to any extra costs involved.

Collecting orders (ex works)

If products are in stock, you will be able to collect them straight from our factory - provided agreed on with us in advance. Please contact our Customer Service Department for more information.

Client-specific products (S-classification)

Besides our standard range, Heraklith® is also pleased to supply a number of client-specific products. These so-called S-products are not part of our standard range and have therefore a minimum purchase quantity of 250m² rounded up to full pallets. This also applies on possible subsequent deliveries. They are developed and produced entirely with the client's requirements

in mind. For that reason, the ordered quantity for S-products cannot be changed nor cancelled after the 48-hour cooling-off period order confirmation. For any specific wishes, please contact your account manager or our Customer Service department. We are glad to inform you about the specific conditions and options.

Changing and cancelling orders

Orders can be changed or cancelled free of charge if we receive the updated order information or cancellation within one working day of our order confirmation.

If changes are made to an order, we will only be able to guarantee the original price, delivery date and other conditions if we have (i) received (ii) assessed the change in question on time (iii) confirmed the change to you in writing.

If we are not able to approve the change required by you subject to the original conditions, we will send you a new proposal containing the updated price, delivery date and/or other conditions.

Complaints

Service is key here at Heraklith and we strive to keep complaints to an absolute minimum. Should you ever have a complaint - despite our best efforts to avoid this situation - please contact us as soon as possible. If you are not satisfied with the products delivered to you, please contact us immediately, before the products in question have been fitted. We will always work with you to find the best solution possible. Please note that we will only be able to handle complaints relating to visible damage, underdeliveries and delivery of the wrong product if recorded on the delivery note carried by the driver.

General sales and delivery conditions

Our general sales and delivery conditions apply to all our offers, communications and agreements, notwithstanding any provision to the contrary on your order forms or documents. The applicability of your purchase conditions, should you have any, are explicitly rejected.

Is a variant of your choice not mentioned? Please contact our Customer Service department. We are happy to think along with you about the possibilities.

Basic

Thickness (mm)	R _p (m ² .K/W)	Product category*	Length (mm)	Width (mm)	Fibre width	Colour	Edge finish wood wool	Wood class	Fire class [EN 13501-1]	Fire resistance [EN 13501-2]	Absorption α _w	Panels / pallet	m ² / Pallet	Art. no.
25	0.30	A	2000	600	2 mm	Untreated	Square edges	PEFC	B-s1, d0	-	max. 0.90	80	96.00	901462

Decorative panel

Thickness (mm)	R _p (m ² .K/W)	Product category*	Length (mm)	Width (mm)	Fibre width	Colour	Edge finish wood wool	Wood class	Fire class [EN 13501-1]	Fire resistance [EN 13501-2]	Absorption α _w	Panels / pallet	m ² / Pallet	Art. no. Untreated	Art. no. White
25	0.30	A	985	590	2 mm	Untreated or white	Bevelled	PEFC	B-s1, d0	-	max. 0.90	80	46.49	653941	653943

A2 Decorative panel

Thickness (mm)	R _p (m ² .K/W)	Product category*	Length (mm)	Width (mm)	Fibre width	Colour	Edge finish wood wool	Wood class	Fire class [EN 13501-1]	Fire resistance [EN 13501-2]	Absorption α _w	Panels / pallet	m ² / Pallet	Art. no. Nature tone	Art. no. White
15	0.15	A	1200	600	2 mm	Nature tone or white	Bevelled	PEFC	A2-s1, d0	-	-	70	50.40	664026	664027
25	0.25	A	1200	600	2 mm	Nature tone or white	Bevelled	PEFC	A2-s1, d0	REI 60	max. 0.90	40	28.80	664028	664029
35	0.40	S	1000	600	2 mm	Nature tone or white	Bevelled	PEFC	A2-s1, d0	-	0.50	30	18.00	664031	664032
50	0.55	S	1000	600	2 mm	Nature tone or white	Bevelled	PEFC	A2-s1, d0	-	0.65	20	12.00	664033	664034

Heratekta

Thickness (mm)	R _p (m ² .K/W)	Product category*	Length (mm)	Width (mm)	Fibre width	Colour	Edge finish wood wool	Edge finish Insulation	Wood class	Fire class [EN 13501-1]	Fire resistance [EN 13501-2]	Absorption α _w	Panels / pallet	m ² / Pallet	Art. no. Untreated	Art. no. White
50	1.35	S	985	590	2 mm	Untreated or white	Bevelled	Tongue and groove	PEFC	B-s1, d0	-	0.30	44	25.57	653929	653946
80	2.30	A	985	590	2 mm	Untreated or white	Bevelled	Tongue and groove	PEFC	B-s1, d0	-	-	26	15.11	654056	654058
100	2.90	A	985	590	2 mm	Untreated or white	Bevelled	Tongue and groove	PEFC	B-s1, d0	-	0.25	22	12.79	654077	654072
125	3.70	A	985	590	2 mm	Untreated or white	Bevelled	Tongue and groove	PEFC	B-s1, d0	-	-	18	10.46	654070	654078
150	4.45	A	985	590	2 mm	Untreated or white	Bevelled	Tongue and groove	PEFC	B-s1, d0	-	0.25	14	8.14	654079	654081
175	5.25	A	985	590	2 mm	Untreated or white	Bevelled	Tongue and groove	PEFC	B-s1, d0	-	-	12	6.97	654098	654138
200	6.05	S	985	590	2 mm	Untreated or white	Bevelled	Tongue and groove	PEFC	B-s1, d0	-	-	10	5.81	654137	654136

Herafoam

Thickness (mm)	R _p (m ² .K/W)	Product category*	Length (mm)	Width (mm)	Fibre width	Colour	Edge finish wood wool	Edge finish Insulation	Wood class	Fire class [EN 13501-1]	Fire resistance [EN 13501-2]	Absorption α _w	Panels / pallet	m ² / Pallet	Art. no. Untreated	Art. no. White
50	1.55	S	985	590	2 mm	Untreated or white	Bevelled	Tongue and groove	PEFC	B-s1, d0	-	0.30	44	25.57	639600	639601
80	2.90	S	985	590	2 mm	Untreated or white	Bevelled	Tongue and groove	PEFC	B-s1, d0	-	-	26	15.11	361532	361533
105	4.10	A	985	590	2 mm	Untreated or white	Bevelled	Tongue and groove	PEFC	B-s1, d0	-	0.30	22	12.79	639666	639668
130	5.25	A	985	590	2 mm	Untreated or white	Bevelled	Tongue and groove	PEFC	B-s1, d0	-	-	16	9.30	361543	361544
150	6.20	A	985	590	2 mm	Untreated or white	Bevelled	Tongue and groove	PEFC	B-s1, d0	-	0.30	14	8.14	639630	639633
170	7.10	S	985	590	2 mm	Untreated or white	Bevelled	Tongue and groove	PEFC	B-s1, d0	-	-	12	6.97	361550	361551

Tektalan A2

Thickness (mm)	R _p (m ² .K/W)	Product category*	Length (mm)	Width (mm)	Fibre width	Colour	Edge finish wood wool	Edge finish Insulation	Wood class	Fire class [EN 13501-1]	Fire resistance [EN 13501-2]	Absorption α _w	Panels / pallet	m ² / Pallet	Art. no. Nature tone	Art. no. White
50	1.25	A	1000	600	2 mm	Nature tone or white	Bevelled	Square edges	PEFC	A2-s1, d0	REI 120-180	0.95	22	13.20	664012	664013
75	2.00	A	1000	600	2 mm	Nature tone or white	Bevelled	Square edges	PEFC	A2-s1, d0	REI 120-180	0.85	14	8.40	664008	664009
100	2.75	A	1000	600	2 mm	Nature tone or white	Bevelled	Square edges	PEFC	A2-s1, d0	REI 120-180	0.80	11	6.60	664010	664011
125	3.50	A	1000	600	2 mm	Nature tone or white	Bevelled	Square edges	PEFC	A2-s1, d0	REI 120-180	0.80	8	4.80	664014	664016
150	4.20	A	1000	600	2 mm	Nature tone or white	Bevelled	Square edges	PEFC	A2-s1, d0	REI 120-180	0.85	7	4.20	664017	664015
175	4.95	S	1000	600	2 mm	Nature tone or white	Bevelled	Square edges	PEFC	A2-s1, d0	REI 120-180	0.80	6	3.60	664018	664019
200	5.70	S	1000	600	2 mm	Nature tone or white	Bevelled	Square edges	PEFC	A2-s1, d0	REI 120-180	0.80	5	3.00	664021	664020
225	6.40	S	1000	600	2 mm	Nature tone or white	Bevelled	Square edges	PEFC	A2-s1, d0	REI 120-180	0.80	5	3.00	664022	664023

Options

Options	Product-category	
Fibre width	1.0 mm	S
Colour	RAL	S

Options

Options	Product-category	
Fibre width	1.0 mm	S
Length (mm)	2000*	S
Colour	RAL	S
Panel variant	Inlay panel	S

* Not possible in 35 and 50mm thicknesses.

Options

Options	Product-category	
Fibre width	1.0 mm	S
Colour	RAL	S

Options

Options	Product-category	
Fibre width	1.0 mm	S
Colour	RAL	S

Options

Options	Product-category	
Fibre width	1.0 mm	S
Colour	RAL	S



This catalogue shows that our Heraklith® portfolio consists of an aligned range of wood wool panels, insulation materials and mounting accessories for a variety of underlying constructions.

Please read our processing instructions carefully to make sure you treat and mount the wood wool panels in the correct manner. Our processing instructions can be found on www.heraklith.ch

These processing instructions give you comprehensive advice on how to process the wood wool panels directly after receipt and show installation instructions for every panel.



www.knaufinsulation.ch

Do you want more information? Please contact us



www.sanelgroup.ch
Tel. +2 (0) 100 062 53 72

1st Settlement new Cairo
Area 3, building 85, Cairo, Egypt

Knauf Insulation GmbH
Industriestrasse 30
4622 Egerkingen, Switzerland
www.heraklith.ch

Heraklith® is a registered
trademark of

